



**CARE SURGICAL**



**2022 PRODUCT CATALOG**





## CARE SURGICAL

### Specialists in Patient Positioning.

Care Surgical is a global company focused on providing safe and comfortable patient positioning products for a variety of surgical procedures. Offering a comprehensive range of disposable and reusable pads, covers and cushions, our products are compatible with most spine and standard operating table systems on the market.

We pride ourselves on being responsive to our customers' needs and welcome new concepts to complement our product range. Our world class customer service and robust quality management systems have earned us ISO 13485 certification.

Our commitment to excellence is why so many customers choose Care Surgical for their patient positioning needs.



## Contents

4	CS Prone & Prone Plus Head Support Systems	13	CS Disposable Comfort Covers
6	CS Disposable Foam Supports	14	CS Bow and Wilson Covers
7	CS Reusable & Disposable Supports	15	CS Disposable Standard Covers
8	CS Contour Head Support	16	CS Standard Covers, Comfort Covers & Cushion Kits
9	CS Head Tray Attachment	17	CS Support Pads
10	CS Spine Frame	18	Index
12	CS Prone Patient Supports		

All Care Surgical products are latex free.





**CS Prone Plus Head Support System & Face Cushions**

- + Distributes the pressure evenly across patient's forehead and cheekbones
- + Use the face cushion with the CS Prone Plus Head Support System to achieve a neutral neckline and to assist with patient monitoring
- + Cushions are compatible with the ProneView® and most other standard helmets and cradles



**CS Prone Head Support System & Face Cushion**

- + Open chin design allows for rotation of the patient without removing the endotracheal tube
- + This unique design removes pressure from the chin without compromising support to the face
- + Use the face cushion with the CS Prone Head Support System to achieve a neutral neckline and to assist with patient monitoring



**CS Prone Plus Face Cushion**

Code: CSM-2512  
Qty: 10 Units



**CS Prone Small Face Cushion**

Code: CSM-2514  
Qty: 10 Units



**CS Prone Plus Head Support System**

Code: CSM-2565  
Qty: 1 System (Helmet and Mirror)



**CS Prone Face Cushion**

Code: CSM-2510  
Qty: 10 Units



**CS Prone Head Support System**

Code: CSM-2560  
Qty: 1 System (Helmet and Mirror)

**CS Disposable Head to Toe Supports**



**CS ProneOne Head Support**

Code: CSM-2520  
Qty: 8 units



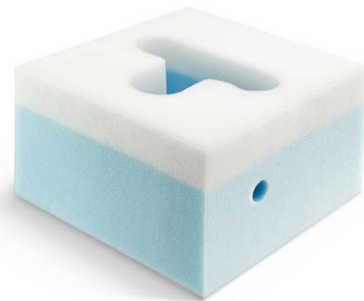
**CS Prone Face Mask**

Code: CSM-2530  
Qty: 5 Units



**CS Disposable Lateral Head Support (Adult)**

Code: CSM-2410  
Qty: 20 Units



**CS Prone Face Block 7''**

Right Intubation Slot (compression packed)  
Code: CSM-2535V  
Qty: 10 Units



**CS Prone Face Block 5''**

Right Intubation Slot (compression packed)  
Code: CSM-2550V  
Qty: 14 Units



**CS Standard Arm Cushions (Pair)**

Code: CSM-2575  
Qty: 10 Pairs



**CS Egg Box Foam 80'' x 20''**

Code: CSM-2585  
Qty: 1 Unit  
12'' section perforations  
Different sizes available on request

**CS Disposable Supports**



**CS Head Strap Disposable**

Code: CSM-2667  
Qty: 10 Units



**CS Traction Boot Foam Insert**

Code: CSM-2666  
Qty: 6 Units

**CS Reusable Supports**



**CS Supine Head Support (Adult)**

Code: CSM-2805  
Qty: 1 Per box



**CS Lateral Head Support (Adult)**

Code: CSM-2812  
Qty: 1 Per box



**CS Heel Supports (Pair)**

Code: CSM-2807  
Qty: 1 Pair



**CS Shin Supports (Pair)**

Code: CSM-2820  
Qty: 1 Pair



**CS Knee Rings (Pair)**

Code: CSM-2821  
Qty: 1 Pair



**The CS Contour connects directly to the Allen® C-Flex® Head Positioning System**



**CS Contour Head Support Cradle**

Code: CSM-2569  
Qty: 1 Unit



**CS Prone Plus Face Cushion**

Code: CSM-2512  
Qty: 10 Units

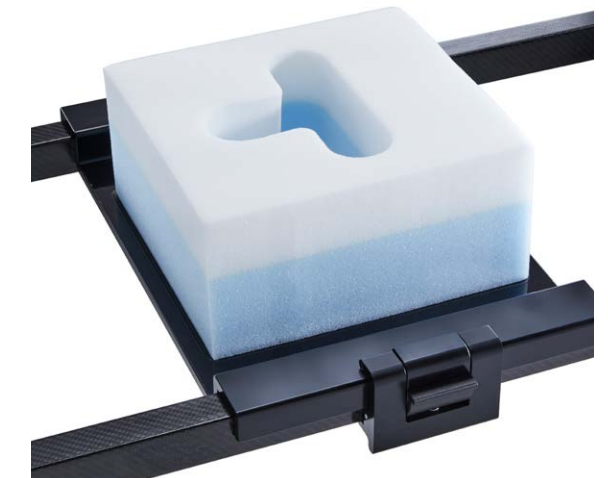
**CS Head Tray Attachment**

- + Fits Jackson style spine rail tops
- + Use with CS Prone Head Supports



**CS Head Tray Attachment**

Code: CSM-2714  
Qty: 1 Unit





The CS Spine Frame - This innovative platform fits all standard operating tables, giving you a patient position comparable to that of a specialist spinal table but at a fraction of the cost.



550 lbs. (250kg) patient weight capacity



Crescent shaped chest support reduces the chance of brachial plexus injury and enables easier positioning of the breasts.



The design of the supports allows the abdomen to hang freely to reduce venal pressure.



**CS Spine Frame Set**

Code: CSM-2715  
Qty: 1 Unit



**CS Chest Support**

Code: CSM-2709  
Qty: 1 Unit



**CS Hip Supports (Pair)**

Code: CSM-2717  
Qty: 1 Pair



**CS Comfort Covers Set - 3 Piece**

Code: CSM-2606-1  
Qty: 6 Sets (1 set included)

**Included Accessories**



**CS Spine Frame**

Code: CSM-2712  
Qty: 1 Unit

**CS Spine Frame Straps (set of 4)**

Code: CSM-2712-4  
Qty: 1 Unit

**Optional Accessories**



**CS Hip Supports - Large (Pair)**

Code: CSM-2719  
Qty: 1 Pair



**CS Hip Supports - Small (Pair)**

Code: CSM-2723  
Qty: 1 Pair





**CS Prone Patient Supports**

Code: CSM-2716  
Qty: 1 - (5 Piece Set)

**The CS Prone Patient Supports are made from multiple layers of pressure-relieving foam**

- + Velcro-free chest support
- + Quick-release locking mechanism
- + Compatible with all Jackson style spine rail tops



**CS Chest Support**

Code: CSM-2709  
Qty: 1 Unit



Quick-release supports lock securely to the table.



**CS Thigh Supports (Pair)**

Code: CSM-2718  
Qty: 1 Pair



**CS Hip Supports - Small (Pair)**

Code: CSM-2723  
Qty: 1 Pair



**CS Hip Supports (Pair)**

Code: CSM-2717  
Qty: 1 Pair



**CS Hip Supports - Large (Pair)**

Code: CSM-2719  
Qty: 1 Pair



**CS Comfort Covers - 5 Piece**

Code: CSM-2600-A  
Qty: 6 Sets

**CS Comfort Covers 30mm, protect the patient from skin shear**

- + Absorb moisture
- + Single-use to aid infection control



**CS Comfort Covers Set - 3 Piece**

Code: CSM-2606-1  
Qty: 6 Sets



**CS Jackson Comfort Covers - 5 Piece**

Code: CSM-2602  
Qty: 6 Sets



**CS Wingset Comfort Covers**

Code: CSM-2605-3  
Qty: 5 Sets

\*Compatible with rail sizes that measure 1.25" (3.2cm) wide and 1.5" (3.8 cm) tall with 14.5" (36.8 cm) space between.



**Choose between CS Standard and Comfort Covers**

- + Compatible with Bow and Wilson frames
- + Absorb moisture
- + Single use



**CS Bow & Wilson Comfort Covers**

Code: CSM-2608-6  
Qty: 6 Per box



**CS Bow & Wilson Standard Covers**

Code: CSM-2570  
Qty: 5 Per box

**CS Standard Covers**

- + Padded chest cushion
- + Soft and waterproof drapes
- + Single use



**CS Jackson Standard Covers - 5 Piece**

Code: CSM-2610  
Qty: 6 Sets



**CS Jackson Standard Covers - 3 Piece**

Code: CSM-2604  
Qty: 6 Sets



**CS Pro-Axis Compatible Set**

Code: CSM-4570  
Qty: 6 Sets

\*See Page 16 for Wilson/Bow Kit Options.



**Build your own kit: Component Options**

Care Surgical products can be combined to create the perfect kit for your needs. Choose from any of the options in this brochure or call our advisors to discuss customising your requirements.



**CS Jackson Standard Covers**



**CS Jackson Comfort Covers**



**CS Comfort Covers**



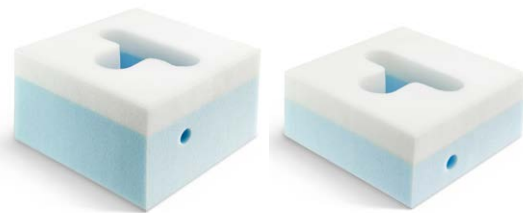
**CS ProneOne**



**CS Prone Plus and Prone Face Cushions**



**CS Standard Arm Cushions (Pair)**



**CS Prone Face Blocks**



**CS Bow & Wilson Comfort Covers**



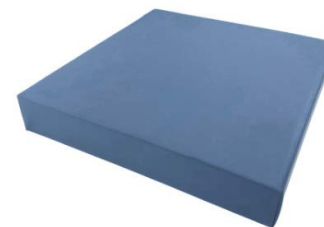
**CS Bow & Wilson Standard Covers**

**CS Support Pads**



**CS Supine Full Flat Top - Pad Only**

Code: CSM-2732  
Qty: 1



**CS Pad 2"**

Code: CSM-2568-2  
Qty: 1



**CS Supine Top - 3" Foam Pad (12" x 20" x 3")**

Code: CSM-2722-3  
Qty: 1



**CS Supine Top - 2" Foam Pad (12" x 20" x 2")**

Code: CSM-2722-2  
Qty: 1



**CS Armboard Pads 2"**

Code: CSM-2733-1  
Qty: 1



**Armboard Pads 3"**

Code: CSM-2733-2  
Qty: 1



Order Code	Product	Units Per Box	Page Number	Please Tick
CSM-2410	CS Disposable Lateral Head Support (Adult)	20	6	
CSM-2510	CS Prone Face Cushion	10	5	
CSM-2512	CS Prone Plus Face Cushion	10	4	
CSM-2514	CS Prone Plus Small Face Cushion	10	4	
CSM-2520	CS ProneOne	8	6	
CSM-2530	CS Prone Face Mask	5	6	
CSM-2535V	CS Prone Face Block 7"- Right Intubation Slot (compression packed)	10	6	
CSM-2536V	CS Prone Face Block 7"- left & Right Intubation Slot (compression packed)	10	*	
CSM-2550V	CS Prone Face Block 5"- Right Intubation Slot, (compression packed)	14	6	
CSM-2560	CS Prone Head Support System	1	5	
CSM-2564	CS Prone Helmet (Helmet Only)	1	*	
CSM-2565	CS Prone Plus Head Support System (Mirror & Helmet)	1	4	
CSM-2565-1	CS Prone Helmet Plus (Helmet Only)	1	*	
CSM-2566	CS Adjustable Mirror (Mirror Only)	1	*	
CSM-2567	CS Adjustable Mirror Plus (Mirror Only)	1	*	
CSM-2568-2	CS Pad 2"	1	17	
CSM-2569	CS Contour Head Support Cradle	1	8	
CSM-2570	CS Bow & Wilson Standard Covers	5	14	
CSM-2570-6	CS Wilson Frame Kit (CSM-2570 & CSM-2575)	6	*	
CSM-2575	CS Standard Arm Cushions (pair)	10	6	
CSM-2585	CS Egg Box Foam	1	6	
CSM-2600-A	CS Comfort Covers	6	13	
CSM-2600-4	CS Prone Plus Comfort Covers Kit (CSM-2512 & CSM-2600-A)	8	*	
CSM-2606-1	CS Comfort Covers - 3 Piece	6	13	
CSM-2602	CS Jackson Comfort Covers - 5 Piece	6	13	
CSM-2604	CS Jackson Standard Covers - 3 Piece	6	15	
CSM-2604-1	CS Jackson Kit - Contains 1 Jackson Chest, 2 Hip Covers & Pair of Arms (CSM-2604 & CSM-2575)	6	*	
CSM-2605-3	CS Wingset Comfort Covers	5	13	
CSM-2608-6	CS Bow & Wilson Comfort Covers 30mm	6	14	
CSM-2609	CS Bow & Wilson Comfort Covers Kit A (CSM-2608-6 & CSM-2535V & CSM-2575)	5	*	
CSM-2609-1	CS Bow & Wilson Comfort Covers Kit B (CSM-2608-6 & CSM-2535V)	6	*	
CSM-2609-2	CS Bow & Wilson Comfort Covers Kit A (CSM-2608-6 & CSM-2575)	6	*	
CSM-2610	CS Jackson Standard Covers - 5 Piece	6	15	
CSM-2610-3	CS Jackson Standard Chest Cover Kit (1 Kit/bag contains 2 chest) \$27.00 for the bag	10	*	
CSM-2611-1	CS Jackson Comfort Cushion Kit B (30mm) CSM-2602 & CSM-2536V & CSM-2575)	6	*	
CSM-2615	CS Jackson Standard Covers Kit A (CSM-2610, CSM-2535V & CSM-2575)	6	*	
CSM-2616	CS Bow & Wilson Standard Covers Kit B (CSM-2570 & CSM-2535V & CSM-2575)	6	*	
CSM-2618	CS Bow & Wilson Standard Covers Kit C (CSM-2570 & CSM-2520 & CSM-2575)	4	*	
CSM-2619	CS Jackson Standard Covers Kit C (CSM-2610 & CSM-2512)	6	*	
CSM-2619-1	CS Jackson Standard Covers Kit E (CSM-2610-3 & CSM-2512)	6	*	
CSM-2619-2	CS Jackson Standard Covers Kit F (CSM-2610-3 & CSM-2512 & CSM-2575)	5	*	
CSM-2623	CS Bow & Wilson Comfort Covers Kit D (CSM2608-6 & CSM-2512 & CSM-2575)	5	*	
CSM-2626	CS Prone Plus With Arms - CSM-2512 & CSM-2575	6	*	

\*Product Available But Not Shown. Catalog Edition: January 2022. Please refer to our website for new product releases/updates.

Order Code	Product	Units Per Box	Page Number	Please Tick
CSM-2628	CS Bow & Wilson Standard Covers Kit F (CSM-2570 & CSM-2535V)	5		
CSM-2629	CS Jackson Standard Covers Kit G (CSM-2610 & CSM-2535V)	6	*	
CSM-2638	CS Jackson Standard Covers Kit D (CSM-2610 & CSM-2512 & CSM-2575)	5	*	
CSM-2641	CS Bow & Wilson Standard Covers Kit F - with CSM-2570 & CSM-2512 & CSM-2575	5	*	
CSM-2642	CS Bow & Wilson Standard Covers Kit G - with CSM-2570 & CSM-2550V & CSM-2575	6	*	
CSM-2642-1	CS Bow & Wilson Standard Covers Kit G - with CSM-2570 & CSM-2575	6	*	
CSM-2653	CS Comfort Cover Kit A (CSM-2535V & CSM-2575 & CSM-2600-A)	6	*	
CSM-2654	CS Comfort Cover Kit B (CSM-2600-A & CSM-2550V)	6	*	
CSM-2655	CS Comfort Cover Kit C (CSM-2600-A & CSM-2550V & CSM-2575)	6	*	
CSM-2655-1	CS Comfort Cover Kit D CSM2-535V & CSM-2600-A	6	*	
CSM-2655-2	CS Comfort Cover Kit E CSM-2535V & CSM-2608-6	6	*	
CSM-2655-3	CS Comfort Cover Kit F CSM-2535V & CSM-2602	6	*	
CSM-2656	CS Comfort Cover Kit (CSM-2600-A, CSM-2512 & CSM-2575)	5	*	
CSM-2666	CS Traction Boot Foam Insert	6	7	
CSM-2667	CS Head Strap Disposable	10	7	
CSM-2703	CS Comfort Cover Kit E (CSM-2600-A & CSM-6100)	8	*	
CSM-2704	CS Comfort Cushion 30mm Kit B (CSM-2600-A & CSM-2512)	6	*	
CSM-2705	CS Bow & Wilson Comfort Covers Kit L (CSM-2608-A & CSM-2550V & CSM-2575)	5	*	
CSM-2706	CS Bow & Wilson Comfort Covers Kit M (CSM-2608-A & CSM-2520 & CSM-2575)	4	*	
CSM-2709	CS Chest Support - Standard	1	11	
CSM-2712	CS Spine Frame	1	11	
CSM-2712-4	CS Spine Frame Straps (set of 4)	1	11	
CSM-2714	CS Head Tray Attachment	1	9	
CSM-2715	CS Spine Frame Set - Standard (Chest, Hips, Frame, Straps & CSM-2606-1)	1	11	
CSM-2716	CS Prone Patient Supports - (Chest Support, Hips Supports & Thigh Supports)	1	12	
CSM-2717	CS Hip Supports - Standard (pair)	1	12	
CSM-2718	CS Thigh Supports - Standard (pair)	1	12	
CSM-2719	CS Hip Supports - Large (pair)	1	12	
CSM-2722-2	CS Supine Top - 2" Foam Pad (12" x 20" x 2")	1	17	
CSM-2722-3	CS Supine Top - 3" Foam Pad (12" x 20" x 3")	1	17	
CSM-2723	CS Hip Support - Small (Pair)	1	12	
CSM-2733-1	CS Armboard Pads 2"	1	17	
CSM-2733-2	CS Armboard Pads 3"	1	17	
CSM-2805	CS Supine Head Support (Adult)	1	7	
CSM-2807	CS Heel Supports (Pair)	1	7	
CSM-2812	CS Lateral Head Support (Adult)	1	7	
CSM-2820	CS Shin Supports (Pair)	1	7	
CSM-2821	CS Knee Rings (Pair)	1	7	
CSM-4570	CS Pro-Axis Compatible Set	6	15	
CSM-4574	CS Pro-Axis Compatible Kit C (CSM-4570, CSM-2512 & CSM-2575)	5	*	
CSM-6100	CS C-Plus Face Cushion	10	*	
CSM-6100-1	CS C-Plus Comfort Covers Kit - (CSM-6100 & CSM-2575 & CSM-2600-A)	5	*	

\*Product Available But Not Shown.





# CARE SURGICAL

Care Surgical LLC  
Marlborough, MA 01752  
Toll Free: 1-866 243 4107  
info@care-surgical.com  
www.care-surgical.com

